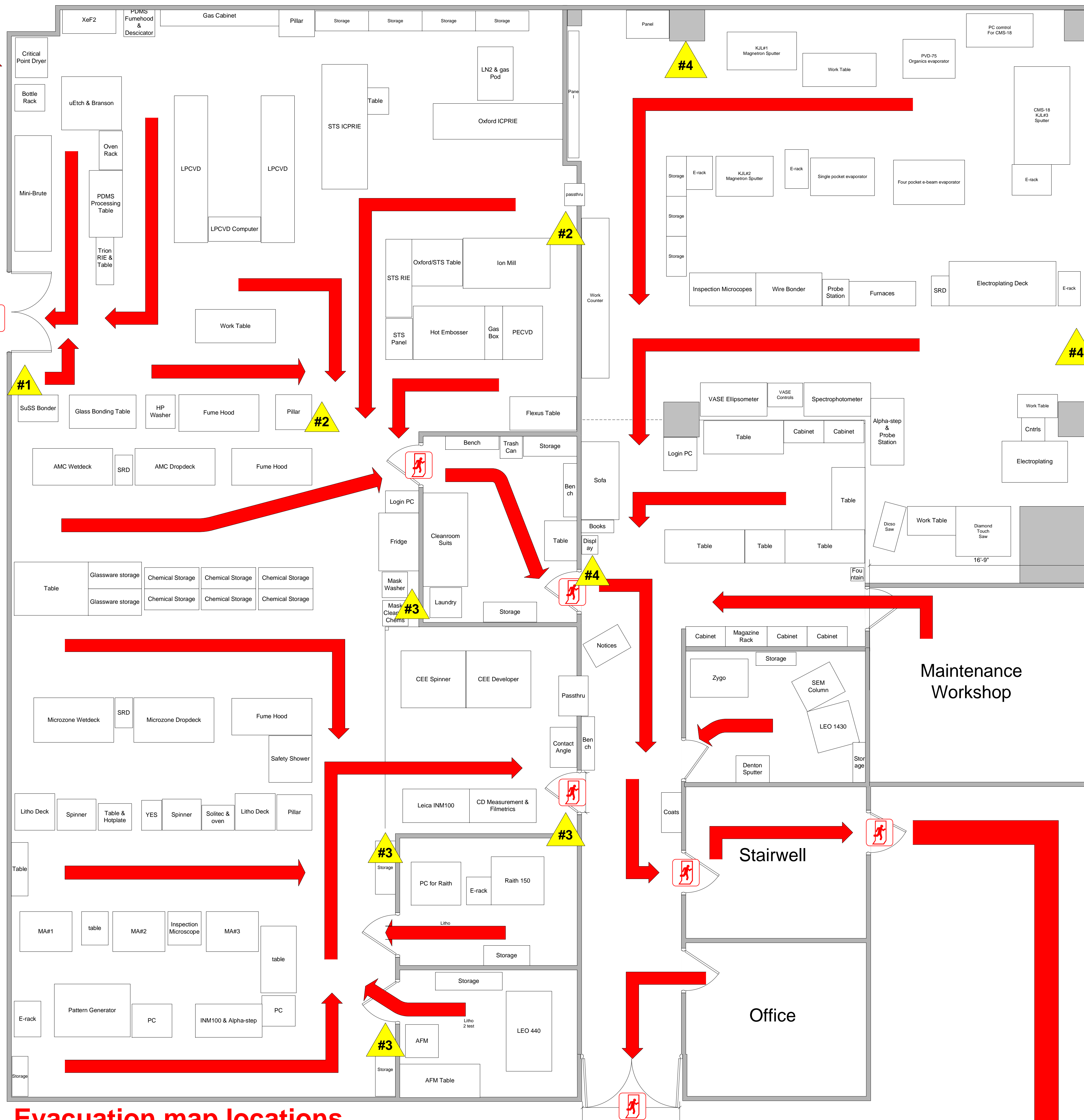


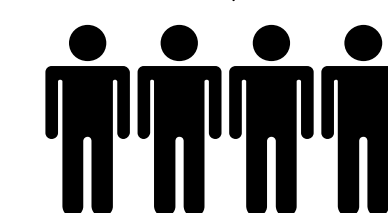
# FULL MAP NANOFAB HAZARDOUS GAS EVACUATION ROUTES

If the RED light is flashing and the Alarm sounds.....  
Leave the lab immediately via the marked exit route and reassemble at the ECERF building main door (NW corner).

Do not re-enter the building until approval is given by emergency response personnel.



**Evacuation map locations**  
#1. Suss & Furnace Area  
#2. Oxford & STS Area  
#3. Litho & Wet Etch Area  
#4. 10K Area



**Front Door of ECERF**